



# EUDR Presentation

SO-B-GREEN

# Table of content



## 01 Who are we ?

- 01 Our story
- 02 Our partners
- 03 Our locations

## 02 Our offer

- 01 Our level of actions
- 02 Our intervention in figures

## 03 EUDR

- 01 Context
- 02 Important dates
- 03 EUDR, what is it ?
- 04 EUDR, who is concerned ?
- 05 What are the commodities targeted ?
- 06 EUDR, our workflow ?

## 04 Our approach

- 01 Our level of interventions
- 02 Our So-B-Modus operandi

## 05 Our team

- 01 Our team
- 02 Contact

# 01 Who are we?

## Parties

- 01 Our story
- 02 Our partners
- 03 Our locations



# Our values



RIGOUR



INTEGRITY



EXIGENCY



RESPONSABILITY



TEAM SPIRIT



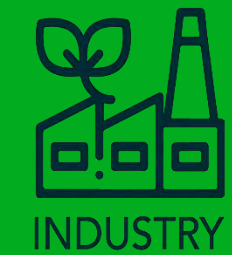
TRANSPARENCY



FLEXIBILITY



INNOVATION



# So-B-Ecosystem

“ Structuring sustainable agricultural supply chain while creating social, environmental, and economic value for the value chain actors ”

## Our mission



# Our story

July  
2018

## Creation

Creation of So-B-Green

January  
2019

## Ghana

Beginning of operations  
in Ghana



October  
2019

## Ivory Coast

Beginning of operations  
in Ivory Coast



May  
2019

## Liberia

Beginning of operations  
in Liberia



# Our locations

France

Ivory Coast  
Ghana  
Liberia



Our offices



Our areas



**idh**  
transforming markets

**SACC**



**Nestlé**



Alliance pour la  
préservation des forêts



GROUP SOPEX  
COMMODITY TRADERS SINCE 1894



**K**  
koudijs

**afri cao**



**BARRY CALLEBAUT**



**RMG**  
concept SA



# They trust us

# 02

# Our offer

## Parties

01 Our level of actions

02 Our intervention in figures



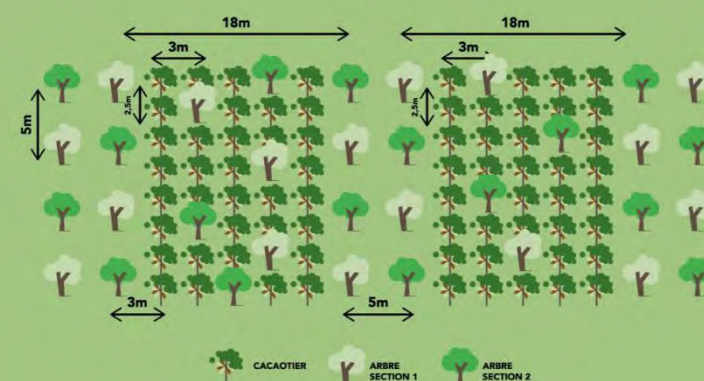
## TRACABILITY EUDR



## CERTIFICATION



## LANDSCAPE RESILIENCE



## FARMERS RESILIENCE



## TRACABILITY & EUDR



By combining field and analytical expertise, we respond precisely to traceability requirements and support our clients in complying with the new RDUE regulations

## CERTIFICATION



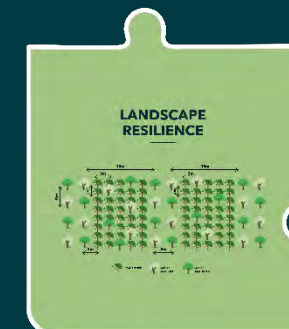
We support you in your certification process by intervening throughout your approach or on *ad hoc* basis, starting with a diagnosis and a compliance plan

## FARMERS RESILIENCE



We support your producers and their households in adapting to socio-economic challenges, with among others, good agricultural practices, income diversification, financial empowerment of women, and children's education

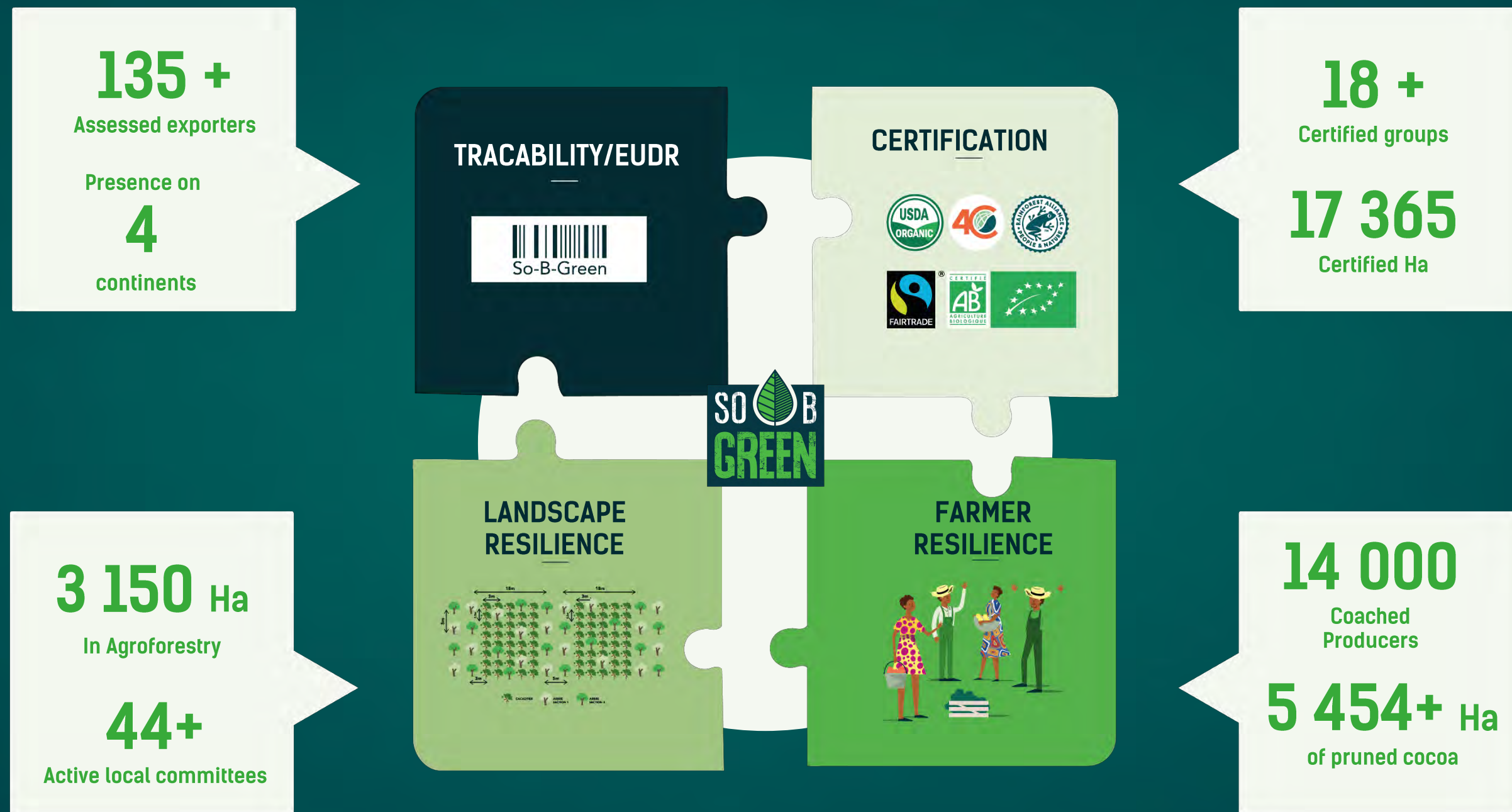
## LANDSCAPE RESILIENCE



Thanks to climate-smart models, we intervene in agroforestry, local governance, and the fight against deforestation



# Our interventions in figures 2024



# 03 EUDR

## Parties

- 01 Context
- 02 Important dates
- 03 EUDR, what is it ?
- 04 EUDR, who is concerned ?
- 05 What are the commodities targeted ?
- 06 EUDR, our workflow ?



# Context

With the ambition of being the first continent to achieve climate neutrality by 2050, the European Union launched the Green Deal in 2019, which is based on a legislative package of laws and regulations guiding the economy and European society of tomorrow.

Deforestation exerts considerable pressure on the climate, biodiversity, and human rights, mainly affecting Sub-Saharan Africa, Southeast Asia, and the Amazon basin, where it has accelerated over the past decades.

In response to this situation, within the framework of the Green Deal, the European Union has adopted various regulations, including the European Regulation against deforestation and forest degradation (EUDR), which came into effect on June 29, 2023. This regulation aims to curb deforestation and forest degradation caused by the production and consumption of certain agricultural commodities in the EU.

By creating zero-deforestation supply chains, the RDUE thus aims to play a central role in reducing deforestation, greenhouse gas emissions, and the global loss of biodiversity.

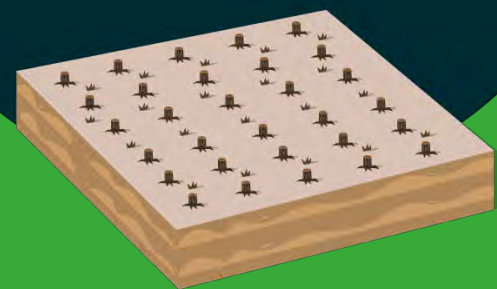
# EUDR & Deforestation

EUDR identifies the production of certain commodities (coffee, cocoa, rubber, palm oil, soy, beef, wood and derived products) as responsible for deforestation

Starting in December 2024, all products concerned by this regulation and imported or exported in the EU must, therefore, have undergone an analysis showing that they present a negligible or zero risk of deforestation and forest degradation

22.8

22.8 million hectares deforested in 2022



x3

The equivalent of 3 football fields are deforested every minute



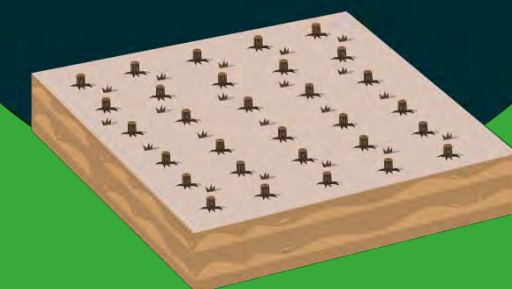
12%

are direct emissions from agricultural production such as livestock and fertilizers



11%

global emissions come from forestry and other land uses, mainly deforestation



# EUDR IMPORTANT DATES



Penalties can reach 4% of the annual turnover

# EUDR, What is it ?



This is a new regulation from the European Union whose main objective is to prohibit companies from placing products that contribute to deforestation and forest degradation on the EU market, while also preventing the export of such products from the EU



## Commodities targeted



Cocoa



Coffee



Palm oil



Cattle



Soya



Wood & rubber





# EUDR, Who is concerned?

## 1 Operators

*Art 2-15 "Any natural or legal person who, in the course of a commercial activity, places the products in question on the market or exports them"*

**Companies placing, for the first time, the raw materials in question on the EU market or exporting them.**

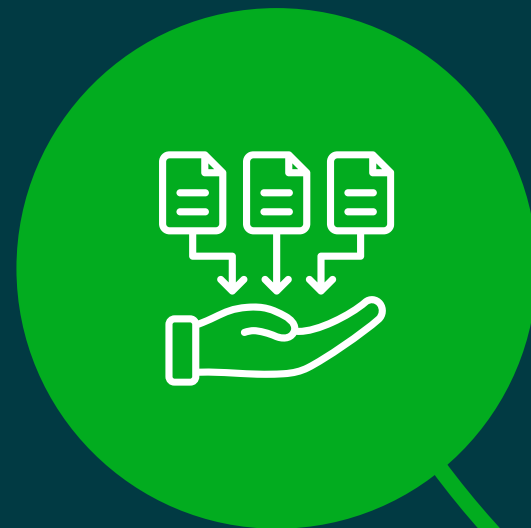
## 2 Traders

*Art 2-17 "Any person who is part of the supply chain, other than the operator, who, in the course of a commercial activity, makes the products in question available on the market"*

**These are companies that trade goods already placed on the EU market.**

**These economic actors are responsible for the storage and sharing of information (with the competent national authorities) on their supply chains.**

# EUDR, Workflow ?



01

## Data collection

- Stakeholder engagement to collect and centralize data
- Data quality verification

## Risk analyses

Our risk assessment through our EU Regulation framework, which supports your team in the analysis of

- Internal Management System
- Traceability
- Deforestation
- Legal compliance

02



## Risk Mitigation

- Recording compliance evidence and managing data on a single platform
- Providing verifiable evidence of mitigation to EU authorities

03





# Data collections

*Article 9 – "Operators must collect information and data demonstrating that the products concerned are compliant"*

**So-B-Green engages your stakeholders and suppliers to ensure the collection of quality data.**

**By combining field team interventions with the use of advanced technological tools and/or remote collection from your suppliers, we centralize, correct if necessary, and verify the transmitted data. The data collection relies, among other things, on :**

- **The presence of an Internal Management System for the EUDR**
- **The existence of a traceability system**
- **The presence of a Territorial Management system**
- **Legal compliance of the actors in your supply chain**

**This data collection is an essential step for conducting risk analysis.**





# Risk Analyses

**Article 10 "Operators must verify and analyze the information collected in accordance with Article 9"**

**By combining analytical expertise and satellite monitoring, So-B-Green supports you in risk analysis through the evaluation of the following elements, as part of your Reasonable Due Diligence Statement.**

- Internal Management System Evaluation of the compliance plan and the use of appropriate mapping and monitoring tools**
- Traceability system verifying the traceability and authenticity of products throughout the supply chain**
- Deforestation risk assessing the presence of deforestation in accordance with the deadline and the provisions of Articles 3a and 3b of the regulation, while evaluating future deforestation risks**
- Legal Compliance verifying compliance with the national legislation of the country for actors in your supply chain**

**Thanks to our decision tree, we then offer our clients a decision support tool regarding the identified risks.**

# Risk Mitigation

Article 11 *"The operator adopts appropriate risk mitigation procedures and measures to achieve a zero or negligible risk before placing the products in question on the market or exporting them"*

**So-B-Green supports you in mitigating identified risks. For this, we intervene :**

- **On the ground to strengthen the capacity of sector actors through coaching and training actions**
- **To establish collaboration with local authorities to strengthen governance in the territories**
- **To deploy a traceability system**
- **To conduct *ad hoc* audits upon request**



# 03 Our approach

## Parties

- 01 Our level of intervention
- 02 Our So-B-Modus operandi



# Our levels of operation



## Our operations:



Légende : non-applicable applicable

Risk Management



0% deforestation



100% tracability



100% legal conformity



Due Diligence Statement

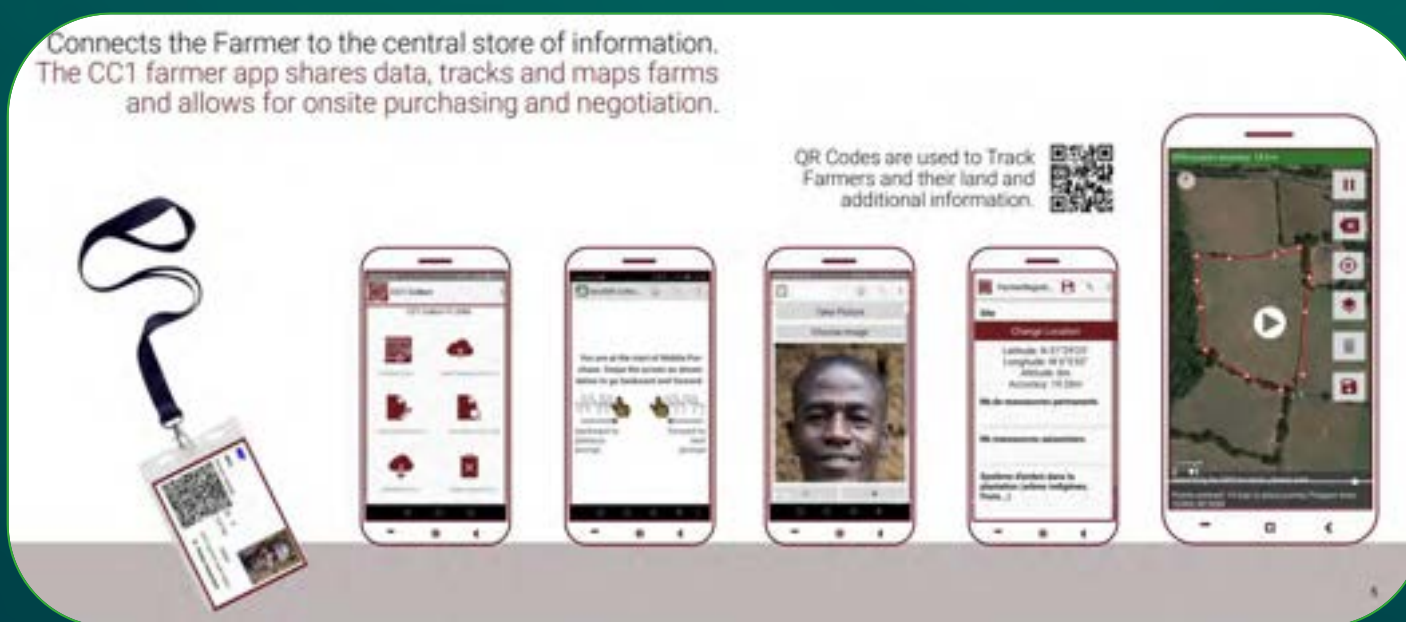
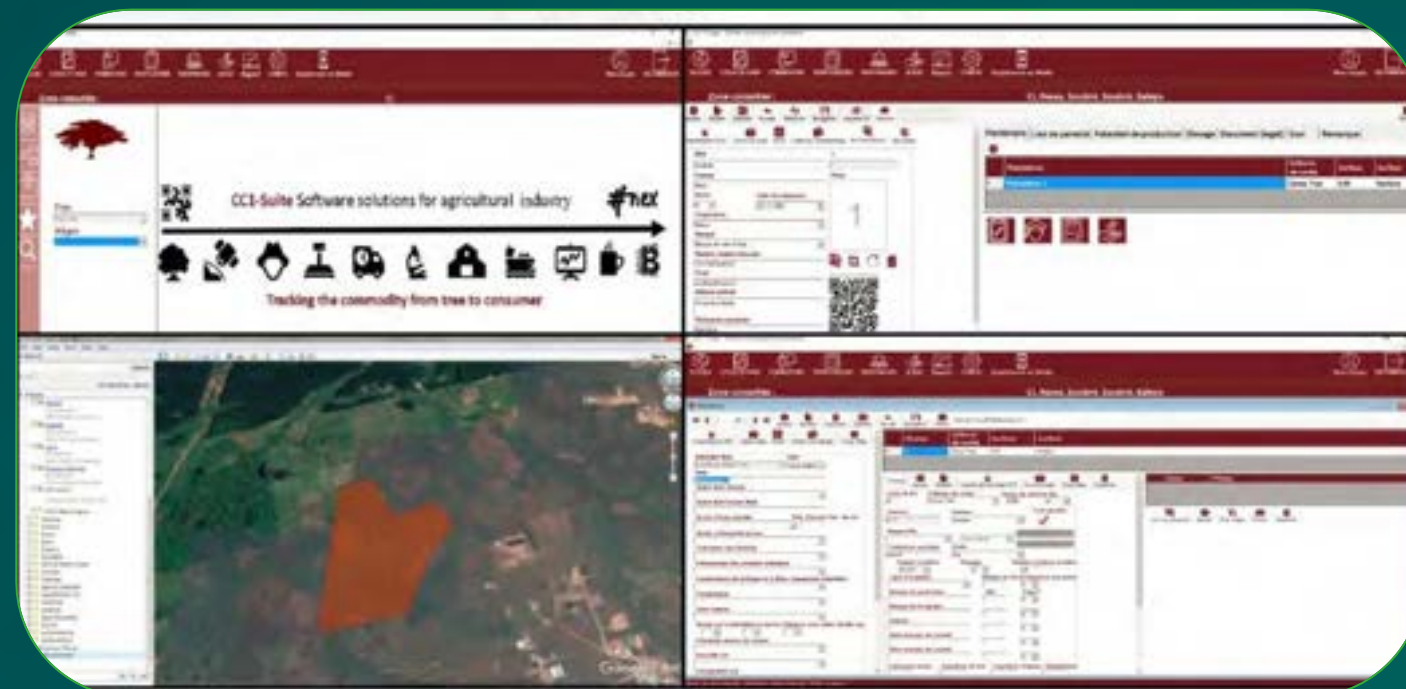


# Our So-B- modus operandi

**1**  
Farm mapping

**2**  
Traceability system

We assist in mapping your producers and, if necessary, deploy a traceability software that tracks the physical flow of your commodity



**SO B GREEN**

### Traceability Certificate

Date	24/05/2023	UUID	http://51.145.244.36/forms/Intra/Detail/881482b-186a-414e-9cc5-21385c3054c
Client	Deimo	Sale reference	21
Contract Number	42534	Shipping Line	MSC
N° OC	72368263	Bill of Lading	MADR/72368263
Vessel	MSC SANTHYA-WM318R	Booking	MADR/72368263
Container Number	MSMU5977620 MSRU7319568	Port Departure	Abidjan
Country	Ivory Coast	Port Destination	BARCELONE / ESPAGNE
Commodity	Cocoa Bean	Packaging	JUB
Origin	Cocoa Bean Ivory Coast	Number Bags	710
Quality	Grade 2	Unit	kg
Certification	Cacao Ordinaire	Weight Kg	50,650
Sustainability Program	My Certification		

Period from: 02/02/2023 to 15/01/2023 From: 04/02/2023 to 05/05/2023 From: 08/01/2023 to 24/01/2023

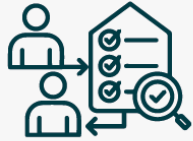
ID Farm.	Id Pur.	Date Pur.	GPS	District	Coops	Date Load	Way Bill	Date In Proc.	Date Process	% Contr.	Total Kg	Or. Qty Pur. Kg		
N-024 (106484)	1380	08/02/23	6.850990 - 6.446961	Haut Sassandra	CAED	No	No	04/02/23	so-090655-2022-2-191	50	08/03/23	0.10%	5145	236



# Our So-B- modus operandi


**3**

Internal Management System (IMS)



**5**

DUE Diligence (against EUDR readiness & Country Risk standards)




## Our EUDR scoring



Through our RDUE framework, we analyze your risk level of non-compliance and that of your suppliers

**EUDR**  
**Diagnosis results**  
**NICOFFEE**  
June 2024  
*All rights reserved*

### COMPANY PROFILE

Name: **NICOFFEE**


Location: 

Commodities:  

Volumes: 20 000 Mt


Number of farmers: 15 000

Plots' surface: 25 000 ha




### EUDR Readiness

**GENERAL SCORE**  
2.32/5 – MODERATE




Nicoffee has a medium level of maturity for EUDR compliance, particularly thanks to a robust legal compliance to economic and social laws in Nicaragua.  
An EUDR Internal Management System is yet to be built and strengthened to ensure sustainable compliance.

IMS for EUDR	1.2/5 – LOW	An IMS for EUDR is required as a good practice to ensure sustainable compliance.
Supply Chain Mapping	2.1/5 – MODERATE	The company has an up-to-date farmer register and is able to trace its coffee beans across the entire value chain.
Farm Mapping & Traceability System	2.1/5 – MODERATE	The company uses a digital tool for traceability matters.
Landscape Mgmt	2.2/5 – MEDIUM	The company uses a tool for deforestation watch and adopts appropriate practices.
Human Rights Mgmt	3.8/5 – VERY GOOD	All farms are being assessed by the local authorities and good human & labour practices have been deployed since dozens of years.



### IMS FOR EUDR


1.2/5 – LOW



**Detail:**  
Bidders were for last year to appoint a manager on the EUDR compliance project. The new manager has started to look for some advice and support from a regional codes authority. However, no formalized farmer or partner relationship has been agreed yet.

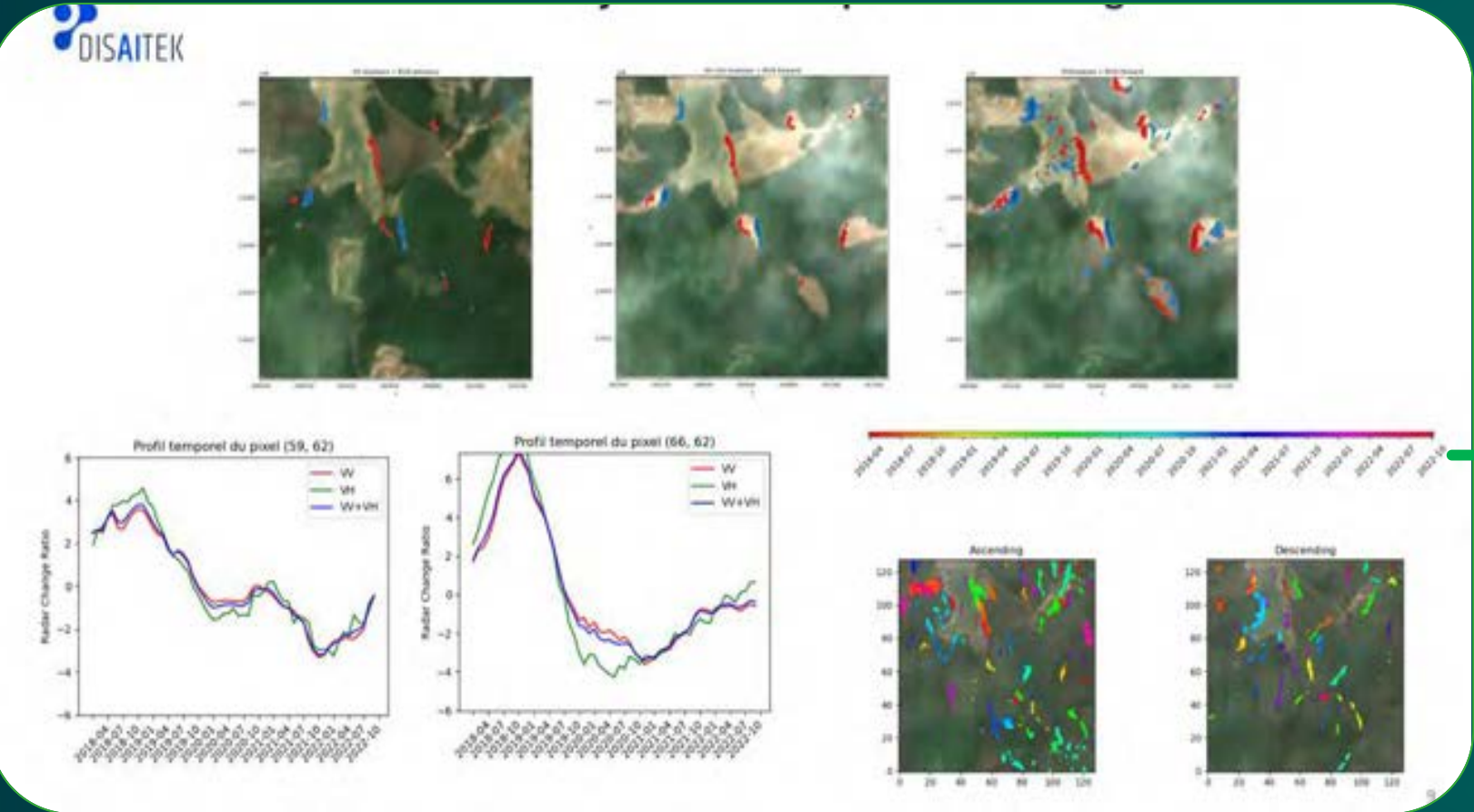
**EUDR continuous monitoring**

- Use of tools designed for EUDR
- Support by an external/sectorial organization for EUDR
- EUDR compliance plan
- Dedicated Team for EUDR purposes



# Our So-B- modus operandi

4  
Geodata  
satelite check



Profile New Shipment Dashboard

### Polygon Compliance

Polygon	Date of Degradation	Status
Polygon 1	2018-09-05	✓
Polygon 2	2018-10-04	✓
Polygon 3	2019-11-02	✓
Polygon 4	2021-05-05	✗
Polygon 5	2017-06-08	✓
Polygon 6	2017-12-12	✓
Polygon 7	2017-12-31	✓
Polygon 8	2018-01-30	✓
Polygon 9	2017-08-15	✓
Polygon 10	2019-03-23	✓
Polygon 11	2018-06-02	✓

agraveline@disaitek.com

### Compliance Results

container reference	CGM/CTD01#5425
contract number	ARM_202407_0001
boat name	Amadeuon
date of shipment	2024-09-01
origin	Vietnam
bl number	Bol925425
product	Coffee
...	25



Send by Email Print

In partnership with DisAltek, one of the leading players in satellite imagery analysis, we provide a service to verify your polygons and GPS data



# Our So-B- modus operandi

## EUDR decision tree

**3**  
Internal Management System (IMS)

**5**  
DUE Diligence (against EUDR readiness & Country Risk standards)

Our decision tree allows you to follow our compliance methodology. Data collection relies on primary and secondary data, this data helps identify risk levels, for which we provide mitigation actions to ensure compliance in your supply chain.



# Our So-B- modus operandi

6

Coaching, training  
& field intervention



7

Audit



- Capacity building, awareness of deforestation and Good Agricultural Practices (GAP)
- Training and behavioral change
- Agroforestry Training
- Support for Local Environmental Governance
- Programs to Combat Child Labor



**03**  
**EUDR**  
**Team**

# Our team



**Charles Tellier**

CEO



**Julien Le Brizaut**

Chief Business Development  
& Sourcing Officer



**Delphine Pernot**

Sustainability Manager



**Alice Juguet**

EUDR Manager



 sobgreen  so-b-green  @so\_b\_green  @sobgreen1

# Book a coffee with us ?



+33 6 24 57 21 36  
+233 544 34 80 47



j.lebrizaut@sobgreen.com  
info@sobgreen.com



sobgreen.com



11 Rue Montalembert  
16000 ANGOULÊME  
Impact Hub, Riviera Palmeraie  
ABIDJAN